

## ACE-TEK 21 SERIES

### Manual Insert Magnetic Stripe Card Reader

### TTL Interface

#### FEATURES

- \* Read magnetic stripe cards conform to ISO 7811
- \* Manual full insert with TTL output
- \* Available in single, dual or triple track configuration
- \* Bi-directional sends data when insert or eject card
- \* Read high and low coercivity magnetic stripes (300-4000 Oe)
- \* Designed for application to Access/Security system etc.
- \* CE class A, FCC class A, UL, cUL and BSMI certified
- \* Optional configuration and bezel are available.

#### SPECIFICATIONS

<b>Electrical</b>					
Power requirements	5VDC±5%				
Consumption	15mA idle, 25mA Max.				
Communication	TTL Interface				
Logic character	Default at Negative, Positive optional				
Ripple	50mVp-p or less				
Dielectric strength	500VDC for 1 minute				
<b>Mechanical</b>					
Body material	PC + 20%GF + 6%(w) TEFR	Weight	Approx. 65g	Insert or eject	Manual
Dimensions	107.5L x 62.0W x 26.0H (mm)				
Mounting	Screw the reader from its side of body				
LED indicator	Optional	Bezel	Default is B type; A and M type are optional.		
<b>Environment</b>					
Operation	-10°C to +50°C	Storage	-30°C to +70°C	Relative humidity	10-90%
<b>Agency Approval</b>					
Rating	FCC class A, CE class A, UL, cUL, BSMI				
<b>Performance</b>					
Read card	Track 1	Track 2	Track 3		
Bit density	210 bpi	75 bpi	210 bpi		
Coercive force	Read 300-4000 Oe Magnetic Stripe				
Read speed	STD card	Jitter +/-15%	Amp. 60%		
	4-40 ips	5-35 ips	5-35 ips		
Card thickness	0.76-1.2 mm				
Error rate	Read < 0.5%				
Head life	500K swipes, 1M optional	Dual head is optional			
MTBF	100,000 hours				
<b>Interconnection</b>					
Wire assembly	Length 120 ±5mm or customized				
Connector	PIN Header 2.00x2.00mm, DIP Type, Male, Right Angle, Dual Rows				
<b>PIN Assignment</b>					

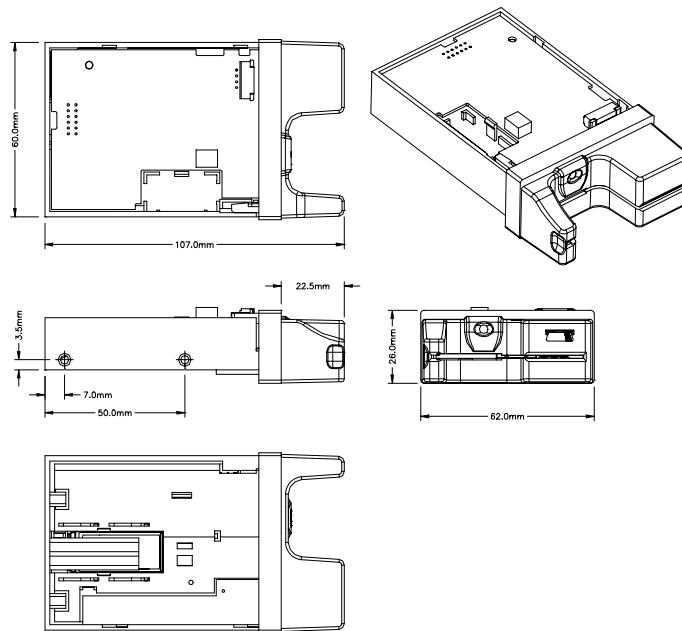
PCB PIN No.	J2 PIN No.	PIN OUT No.	Triple track (default)	Dual track	Single track
1	11	1 (BLACK)	+5V	+5V	+5V
2	12	2 (BROWN)	GND	GND	GND
3	9	-----	SHIELD	SHIELD	SHIELD
4	10	6 (GREEN)	RCP2	RCP2	-----
5	7	3 (RED)	CLS*	CLS*	CLS*
6	8	8 (VOILET)	/RDP2	/RDP2	-----
7	5	5 (YELLOW)	RCP1	RCP1 or RCP3	RCP1
8	6	7 (BLUE)	/RDP1	/RDP1 or /RDP3	/RDP1 or /RDP2 or /RDP1
9	3	10 (WRITE)	/RDP3	-----	-----
10	4	9 (GRAY)	RCP3	-----	-----
11	1	4 (ORANGE)	/Sensor*	/Sensor*	/Sensor*
12	2	-----	/Card In (optional)*	/Card In (optional)*	/Card In (optional)*

Note 1: While the magnetic head is contacting with magnetic stripe of card, the signal will be detected from pin-5.

It may be used as card in detection.

2: The pin-11 is used for detecting if the card is in completely.

3: The pin-12 is an optional that is used to detect if card is in, no matter it is magnetic card or not.



**WARRANTY**

This product is served under one-year warranty to the original purchaser. Within the warranty period, merchandise found to defective will be repaired or replaced. This warranty applies to the products only under the normal use of the original purchaser, and in no circumstances covers incidental or consequential damages though consumers’ misuse or modification of the products.

NOTICE: The issuer of this manual has made every effort to provide accurate information. The issuer should not be held liable for any technical and editorial omission or errors made herein; nor for incidental consequential damages resulting from the furnishing, performance or use of this material. This document contains proprietary information that is protected by copyright. All rights are reserved. No part of this document may be photocopied, reproduced, or translated without the prior written consent of the issuer. The information provided in this manual is subject to change without notice.

**Technical Support: Call 1-888-881-1900**